



**OPTIMUM
ARMS**

THE WISE CHOICE

**INSTRUCTION MANUAL
FOR
SEMI-AUTO INERTIA OPERATED SHOTGUNS**

**WARNING: READ THE INSTRUCTIONS AND SAFETY PRECAUTIONS IN
THIS MANUAL CAREFULLY BEFORE USING THE FIREARM.**

SAFETY FIRST

Please do not use your shotgun before reading safety rules and this manual. Observe these rules of safe gun handling.

- 1.** Always keep the muzzle pointed in a safe direction. Watch the muzzle at all time, never point a gun, accidentally or intentionally, at any person or anything you do not intend to shoot. Identify the target before shooting; do not shoot at sounds.
- 2.** Always treat a gun as if it is loaded - it may be!
- 3.** Keep your finger off the trigger while operating the action and at all other times until you are ready to shoot.
- 4.** Keep the safety "on" or in the "safe" position at all times until you are ready to fire. Do not rely on your gun's safety, the safety on any gun is a mechanical device and is not intended as a substitute for common sense or safe gun handling.
- 5.** Learn how your gun functions and handles. If you do not thoroughly understand the proper use and care of your gun, seek the advice of someone who is knowledgeable.
- 6.** Do not alter or modify any part of the firearm.
- 7.** Store guns unloaded, separate from any ammunition, and out of the reach of children.
- 8.** Be sure the barrel is clear of any obstructions before loading. Make it a habit to check the barrel every time before loading.
- 9.** Be sure you have and use the proper ammunition. A 20 gauge shell will enter a 12 gauge chamber far enough so that a 12 gauge shell can be loaded behind it. Also, a 3 inch shell may fit into a 2 inch chamber, but the crimp at the mouth of the shell will unfold into the forcing cone. If either of these things occur and you fire the gun, the gun will explode, damaging the gun and possibly causing serious injury or death to you and those around you.
- 10.** Wear protective shooting glasses and adequate ear protection when shooting.
- 11.** Never climb or jump over anything, such as a tree, fence, or ditch, with a loaded gun_ Put safety ON_ Open the barrel on barrel break shotguns, remove the shells/discharge the chamber on pump and semi-auto shotguns and hand the gun to someone else or place it on the ground on the other side of the obstacle before crossing it yourself. Do not lean a gun against a tree or other object; it could fall and possibly discharge.
- 12.** Do not shoot at a hard surface or at water. Bullet and shot can ricochet or bounce off and travel in unpredictable directions with great velocity.
- 13.** Never transport a loaded gun. DO NOT place a loaded gun into a vehicle. The gun should be unloaded and placed into a case when not in use.
- 14.** Never drink alcoholic beverages before or during shooting.
- 15.** Never try to repair the shotgun on your own if you are not educated or expert of. This may cause un-willed damage to your gun which may seriously injure you or someone around you.
- 16.** Never fire your gun without choke tubes (if comes with interchangeable choke tubes and a thread in the muzzle) snugly tightened in barrels.

ASSEMBLY

In the packing, the shotgun is divided into two parts: receiver and barrel group. (Figure 1)



Figure 1

Be sure the barrel inside and out is clean and out of any obstruction. Loosen the magazine cap and take off the fore-end by pushing straight forward to the muzzle direction. (Figure 2)



Figure 2

Replace the front part of fore-end to the barrel ring. (Figure 3)



Figure 3

Pull the bolt group half back by pulling the bolt handle. This will ease the assembly process. Hold the matched barrel and fore-end together and by following the magazine tube to slide in the barrel ring and fore-end, place the barrel extension until properly the receiver and the barrel. Be sure the back of the fore-end is correctly placed to the fore-end plate. (Figure 4)



Figure 4

Tighten the magazine cap to the magazine and release the bolt by pushing the bolt release button on the side of the receiver. (Figure 5)



Figure 5

TRIGGER SAFETY

Be sure that the safety is ON before loading your shotgun. The safety button is onto the trigger group. When you see complete black line that means the SAFETY is ON. When you push the button from right to the left you will see the red colour and that means the SAFETY is OFF. (Figure 6)

LOADING

Push the safety button to ON. Pull the bolt handle completely back and leave. If the bolt group does not release, push the bolt release button. (Figure 5) The carrier will be up to enable you load cartridges in the magazine tube. After you loaded the limit or your desired rounds, press the carrier latch to drop it down getting ready to accept cartridges from the magazine and one will drop on the carrier. (Figure 7)

To chamber the cartridge, pull the bolt handle completely back and release. Now the cartridge is chambered and you can place another cartridge in the magazine instead of the chambered one. Now your shotgun is ready to fire and make the safety ON only when you are ready and sure to fire.



DISCHARGING

Fired shells will be automatically ejected out the receiver. To discharge the cartridges not red, maket he safety on rst. Pull the bolt handle completely back to take out the chambered shell if any. If no cartridge is dropped on the carrier, to discharge the cartridges from the magazine pres the carrier latch in front of the trigger guard. (Figure 7) By repeating to pull the bolt handle back and release you can discharge all cartridges from the magazine.



Figure 8

DISMANTLING THE BARREL AND FORE-END

Pull back the bolt handle and lock the bolt group back. Loosen the magazine cap reverse clockwise and take it o. (Figure 8) By holding the fore-end and the barrel together take them o the receiver and the magazine tube in paralel to the tube straight forward. (Figure 9)



Figure 9

DISCHARGING DISMANTLING THE BOLT GROUP

Press the bolt release button to release the bolt group forward. Cover the bolt handle meanwhile to avoid and damage between the bolt group and receiver. Pull of the bolt handle. (Figure 10) Then pull the bolt group straight forward to the muzzle direction, and take it away. (Figure 11)



Figure 10

DISMANTLING THE TRIGGER GROUP

In order to dismantle the trigger group, push the trigger group pin with a thin pin and take it out. After that, by pushing first the front down and pushing the trigger group to the direction of the barrel and take it out. (Figure 12-13)



Figure 11

MOUNTING THE TRIGGER GROUP

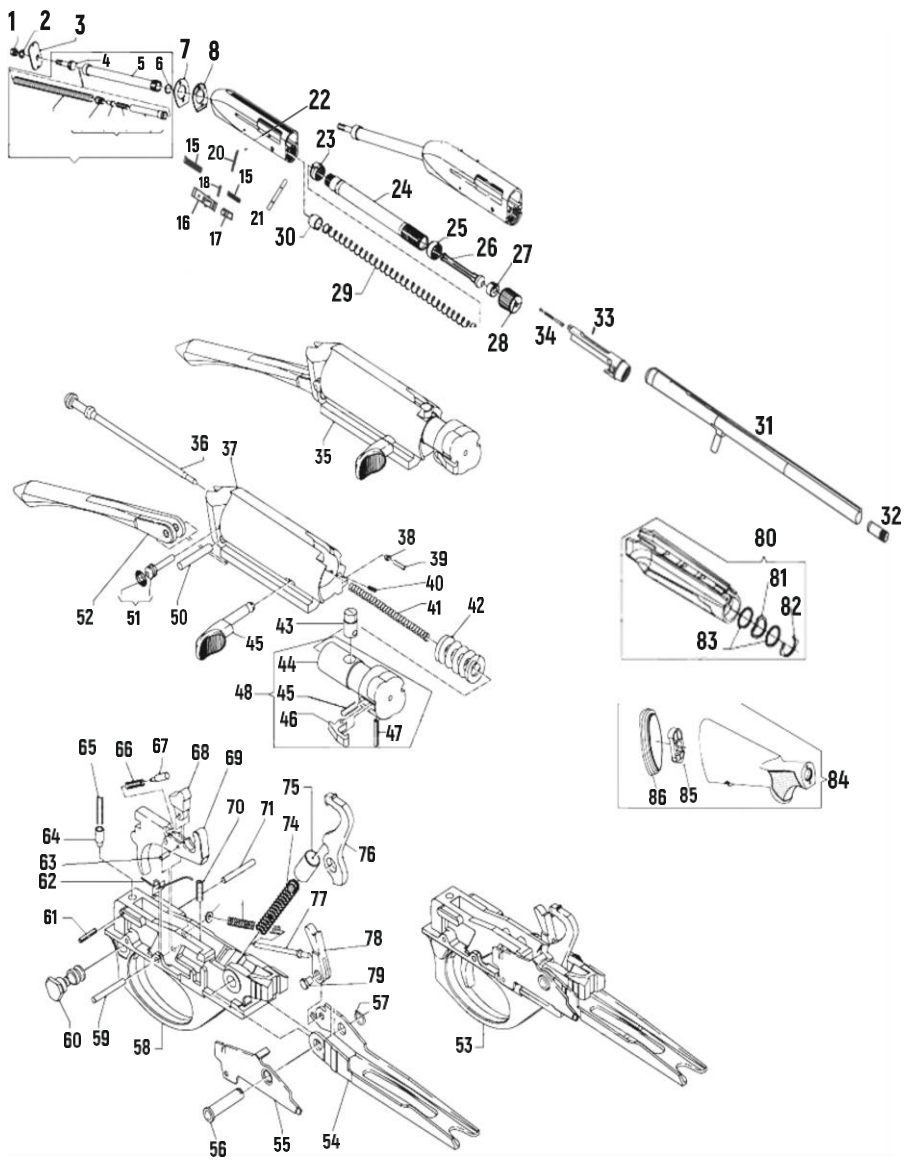
In order to mount the trigger group to its place again after cleaning and lubricating, you can mount back by pushing the trigger group to the direction of the stock and at the same time you must align the holes of the receiver and the trigger group to house the trigger group pin. (Figure 12-13)



Figure 12



Figure 13

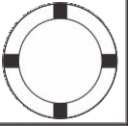
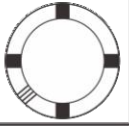
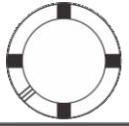

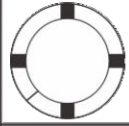
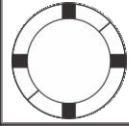


12 GA. GENERAL ASSEMBLY - PART LIST

Stock No	Description	Stock No	Description
1	Stock Holding Nut	44	Locking Head
2	Stock Holding Lock Washer	45	Extractor Spring
3	Locking Plate	46	Extractor
4	Stock Retaining Nut Screw	47	Extractor Retaining Pin
5	Recoil Spring Tube	48	Locking Head Assembly
6	Recoil Spring Plunger Retaining Ring	49	Bolt Handle
7	Cast Change Shim	50	Link Pin
8	Drop Change Shim	51	Firing Pin Retaining Pin
9	Recoil Spring	52	Link
10	Damper Pin	53	Trigger Group Assembly
11	Damper Spring	54	Carrier
12	Recoil Plunger Spring	55	Cartridge Drop Lever
13	Recoil Plunger	56	Trigger Pin Bushing
14	Recoil Spring Plunger Assembly	57	D-Clip
15	Cartridge Latch Spring	58	Trigger Guard
16	Cartridge Latch	59	Trigger Pin
17	Cartridge Stop	60	Safety
18	Cartridge Latch Pin	61	Safety Spring Retaining Pin
19	Cartridge Stop Spring	62	Cartridge Drop Lever Spring
20	Cartridge Stop Pin	63	Disconnecter Pin
21	Trigger Group Receiver Pin	64	Safety Plunger
22	Receiver	65	Safety Plunger Spring
23	Forend Bushing, Rear	66	Disconnecter Spring
24	Magazine Tube	67	Disconnecter Plunger
25	Barrel Stop Ring	68	Disconnecter, Matte
26	Limiter Plug	69	Trigger
27	Magazine Spring Retainer	70	Trigger Spring
28	Magazine Cap	71	Trigger Pin
29	Magazine Spring	72	Washer
30	Magazine Follower	73	Carrier Spring
31	Barrel	74	Hammer Spring
32	Choke Tube	75	Hammer Spring Cap
33	Ejector Retaining Screw	76	Hammer
34	Ejector	77	Carrier Spring Plunger
35	Bolt Assembly	78	Breech Bolt Latch
36	Firing Pin	79	Breech Bolt Latch Pin
37	Bolt Body	80	Forend
38	Bolt Handle Pin	81	Forend Spring Washer
39	Bolt Handle Retaining Spring	82	Forend Elastic Ring
40	Bolt Handle Spring Retaining Pin	83	Forend Flat Washer
41	Firing Pin Spring	84	Stock
42	Inertia Spring	85	Insert (For Synthetic Stock Only)
43	Locking Head Pin	86	Recoil Pad

USAGE OF CHOKE TUBES

The choke is what controls the openness or tightness of the pattern of your shot-gun. The chart below lists the choke available (from open to tight), and the corresponding marks that indicate the choke of your specific shotgun.

	SKEET	IC	M	IM	F	XF
CHOKE TUBE						
BBLS	C L	****	***	**	*	XF

Never fire or run gun cleaning tools through a barrel that uses choke tubes without having a choke tube installed. The threads of the choke tube and the internal threads of the barrel should be cleaned after each use and before installation of the tube.

To install a tube, insert the tube into the barrel and tighten with your fingers. Once the tube is finger tightened, tighten with the appropriate choke-tube wrench until the tube is snug. **DO NOT over tighten or forcefully tighten with wrench.**

USAGE OF STEEL SHOT

The choke (bore constriction) in all modern shotguns has been established based on the pattern performance of shot shells loaded with lead shot. When using the steel shot shells, you will notice a different performance in pattern density versus the established lead shot pattern, because the steel shot is harder and lighter than lead shot.

You should be aware of the following differences and cautions:

Never shoot steel shot loads in a full choked barrel or full choke tubed barrel. To do so may cause the barrel to swell or rupture. In general, steel shot fired with a modified choke will produce the equivalent of a lead full choke pattern. This will be true of all steel shot sizes up to and including no. 2. The established improved cylinder chokes will produce the equivalent of a (lead) modified choke pattern.

All steel shot sized larger than no. 2, and including special sized such as -F-, 'T', etc., should be used only with improved cylinder chokes. These steel shot sized, when used in improved cylinder chokes, will produce patterns equivalent to (lead) full choke patterns. The established cylinder choke or bore will produce the equivalent of a modified (lead) pattern.

INSTALLATION OF MAGAZINE PLUG

Some Countries and local hunting regulation may require that a shotgun be limited to a maximum shell capacity of three (3) rounds (1 in chamber and 2 in the magazine).

Your shotgun may be packed with a magazine plug for this purpose OR may come the limiter plug already in the magazine tube. Please follow the instruction below to install or uninstall.

Installation:

1. Remove the forend screw cap, the forend and the barrel.
2. At the threaded end of the magazine tube (*where the forend screw cap fits*) you will locate a black snap ring.
3. A large blade screw driver should be used to remove the snap ring. **CAUTION: The snap ring will be under pressure from the magazine spring.** Do not remove the snap ring in a manner where the ring could fly out and strike you or anyone else causing injury, particularly to the eye.
4. Compress the magazine spring into the magazine tube, and insert the magazine plug (small end *first*). Push the magazine plug and insert the snap ring so the snap ring end is flush with the end of the tube.

MAINTENANCE AND CLEANING

Caution: Make sure the gun is UNLOADED and take help from an experienced person or gunsmith if you do not have self confidence of a true maintenance.

1. Make sure the broad, polished finely fitted mating surface of the breech block and receiver is especially clean and lightly oiled with high quality gun oil. Do not use silicone or lanolin.
2. Run an oil patch through the bore with a cleaning rod starting from the breech end. To prevent leading, use a cleaning solvent and brass brush to clean the bore periodically. Follow this cleaning with one or two clean oil patches. Important: If your gun is equipped with choke tubes, do not use a brass brush to clean the barrels without having a choke tube installed. Barrels that utilize choke tubes must also have the choke tubes removed to clean and oil the threads inside the barrel and the choke tubes themselves. This will protect the threads and prevent dirt build up that can cause tubes to become difficult to remove.

Do not over tighten choke tubes. Wipe all exposed metal surface with an oiled cloth before storing. Do not squirt or pour oil into the inside mechanism because it may hamper proper functioning. After extended periods of heavy use, your gun should be taken to a qualified gunsmith to have the action disassembled for professional cleaning and lubrication.

3. Care for your wood stock and forearm the same way you would a piece of furniture with the same finish.

SERVICE AGREEMENT AND LIMITED WARRANTY

agrees to service its products free of charge for defects in materials and workmanship in accordance with the service agreement listed below. The obligation of under this agreement is limited to the repair or replacement of unserviceable parts and does not cover any incidental or consequential damages. Other than the express warranty contained herein makes no warranties, express or implied.

will repair or replace any unserviceable part(s) for one (1) year from date of purchase and further will supply free parts (Wood not included) for an additional four (4) years in accordance with the above warranty statement provided your firearm had not been altered, abused, willfully damaged, or damaged by overpressure ammunition. This agreement is not transferable; its benefits apply only to the original purchaser.

To obtain free service during the time this agreement is in effect, make sure your firearm is unloaded, and send it to

This agreement and the warranties contained herein are void if your registration card is not received with a copy of your sales slip within 30 days from date of purchase.

SHIPPING

When returning your gun for service, please take care in packing. Disassemble your gun, wrap in paper or other protective media and place gun in the original box. (THIS BOX WILL PROTECT THE GUN BUT IS NOT DESIGNED FOR SHIPPING). Wrap box in a cardboard box approved for interstate shipping.

is not responsible for damage incurred during shipping.

INSTALLATION OF MAGAZINE PLUG

Some Federal, State and local hunting regulation may require that a shotgun be limited to a maximum shell capacity of three (3) rounds.

Your shotgun has been packed with a magazine plug for this purpose.

Installation:

1. Remove the forend screw cap, the forend and the barrel.
2. At the threaded end of the magazine tube (where the forend screw cap fits) you will locate a black snap ring.
3. A large blade screw driver should be used to remove the snap ring. **CAUTION: The snap ring will be under pressure from the magazine spring.** Do not remove the snap ring in a manner where the ring could fly out and strike you or anyone else causing injury, particularly to the eye.
4. Compress the magazine spring into the magazine tube, and insert the magazine plug (small end first). Push the magazine plug and insert the snap ring so the snap ring end is flush with the end of the tube.

THANK YOU

Thank you for purchasing a shotgun. We are sure this gun will bring you years of hunting and/or shooting pleasure. Your satisfaction is the key to our success. Please let us know if we can be of service and please relay any observations about your gun's performance or appearance.

PURCHASER'S RECORD

Model Number _____

Purchase Date _____

Gauge or Caliber _____

Purchase Price _____

Store Name _____



**OPTIMUM
ARMS**

THE WISE CHOICE