



**OPTIMUM  
ARMS**

**THE WISE CHOICE**

**INSTRUCTION MANUAL  
FOR  
OPT S 410 SHOTGUN**

**WARNING: READ THE INSTRUCTIONS AND SAFETY  
PRECAUTIONS IN THIS MANUAL CAREFULLY BEFORE USING THE  
FIREARM.**

## **WARNING AND SAFETY REGULATIONS**

1. Read the instruction manual before starting to use your shotgun.
2. Before using your shotgun, make sure that the chamber and the barrel are clean.
3. Always hold the barrel of your shotgun in a safe direction.
4. Make sure you use dry, clean, right caliber and the appropriate pressure cartridge.
5. Keep your shotgun in a safe place to prevent access to children and unauthorized persons.
6. Always use eye, ear and body protection accessories during shooting.
7. While filling and unloading the shotgun, keep your finger off the trigger even if it's in a safe position.
8. The mechanical and structural features of your shotgun must be preserved in the way it was produced, and there should be absolutely no change to the pieces of the shotgun.
9. Clean up and maintain your shotgun each time you use it, in accordance with the maintenance guidelines in this instruction manual.
10. Read the laws and regulations about possession, transport and use of firearms and make sure you complete all the procedures required.

## TECHNICAL SPECIFICATION



MODEL	OPT S 410
CALIBER	36 GAUGE (.410 CAL)
OPERATION	GAS OPERATED
WEIGHT (EMPTY)	3700 gr.
OVERALL LENGTH	920 mm
HEIGHT	120 mm
BARREL LENGTH	470 mm
SIGHT RADIUS	420 mm
MAGAZINE CAPACITY	5+1, 10+1

## **SHOTGUN OPERATING PRINCIPLE**

With the first motion from the charging handle of the self-charged semi-automatic gas shotgun, the action moves backwards. The recoil spring stores energy from this motion of the action, allowing the trigger group to load. The action, moving at the right speed, drags the first cartridge into the barrel chamber. When the trigger is pressed, the detonation system is activated and the cartridge explodes in the barrel. The detonation generated by the cartridge detonator; allows the cartridge plug, buckshot or bullet fragments to leave the barrel at a high speed. A part of the high-pressure gas caused by the explosion, passes through the barrel vent, reaches through the surface of the piston in the gas chamber, acting against the recoil spring, until it unlocks the rotating locker. With the locker unlocked, the action comes back and throws out the empty shell. With the energy of the compressed recoil spring, the action is ready to fire again when it finds a new cartridge out of the magazine, drives it to the chamber. This process repeats automatically each time the trigger is pressed.

## IMPORTANT WARNINGS

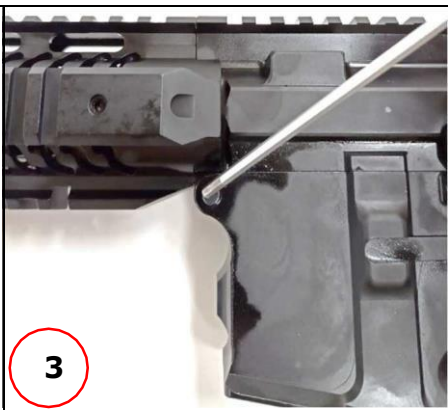
This shotgun is designed to work with its original components. It is your responsibility to correctly reassemble the shotgun, when components are removed or changes are made. To ensure that your shotgun works properly and safely, it is mandatory to use only parts produced by the manufacturer as replacement parts. The shotgun owner is responsible for any issues that could arise as a result of disassembly or replacement parts reassembly of his shotgun.

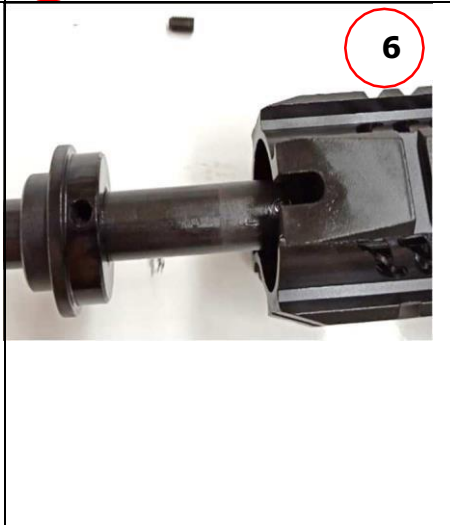
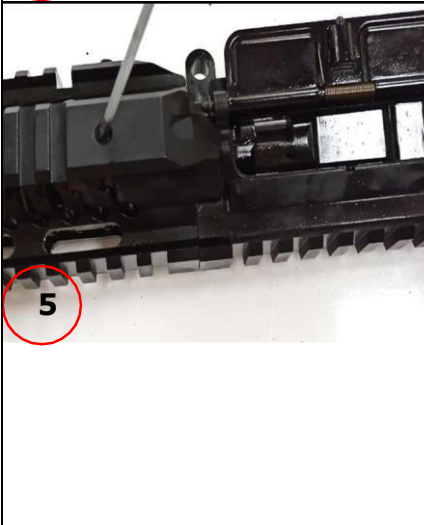
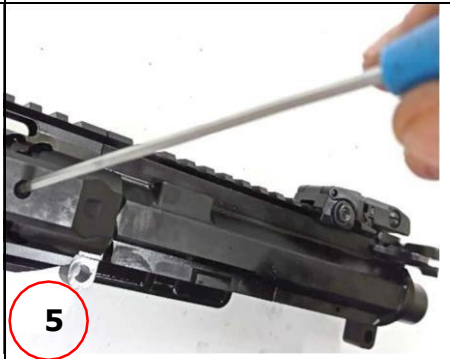
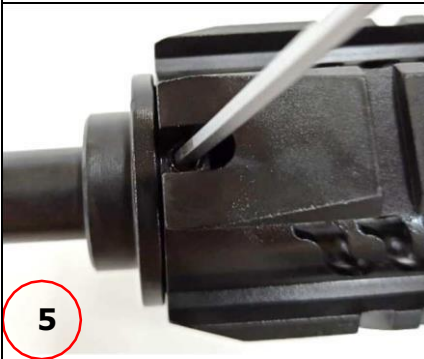
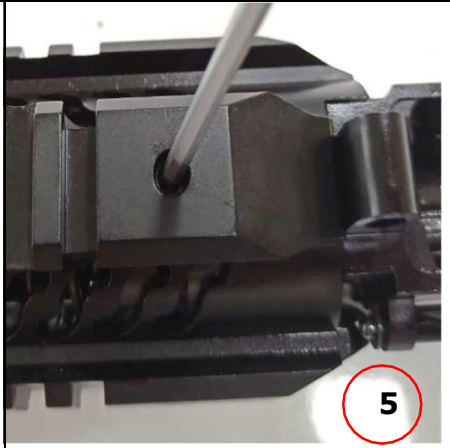
- **Lubrication warning:** Do not use grease or similar thick oil to maintain your shotgun. Use thin oil and spray shotgun oil. Make sure that the barrel and the chamber are clean and dry before shooting. Never smear oil on a cartridge and fire. With any obstacles in the barrel, firing the shotgun may damage it and cause injuries or death. The shotgun owner is responsible for properly maintaining and cleaning it.
  
- **Maintenance warning:**
  1. Take down your firearm for maintenance.
  2. Use the appropriate ramrod. With a solvent impregnated tissue fixed at the ramrod tip, move several times in the barrel. Then repeat the same procedure with a dry tissue and clean up all the dirt and residues inside the barrel.
  3. After cleaning with the ramrod above in the barrel, if there is still bullet residues, impregnate a brass wire brush in the solvent and brush the barrel interior. If there is still bullet residues, repeat the last operation.
  4. The action, piston and inner receiver should be very lightly oiled.

5. Reassemble the firearm and clean out the external metal surfaces and barrel interior with a slightly oily piece of cloth.
6. Keep the firearm in a safe and locked place out of children and unauthorized people's access. Never keep your firearm in a leather case because even if you envisage to keep it dry, leather will attract humidity.

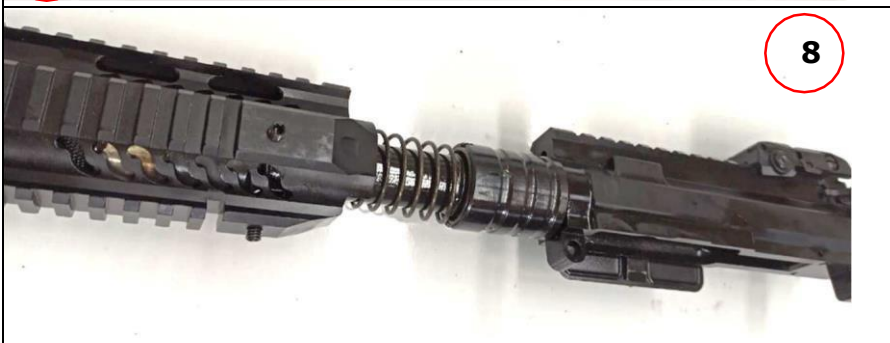
## **FIREARM DISASSEMBLY AND CLEANUP**

1. Before starting the disassembly, make sure that the firearm barrel point to a safe direction and your fingers are out off the trigger. The firearm should be absolutely empty.
2. Remove the magazine by pressing the magazine latch.
3. Remove the receiver pins by pushing them back.
4. Disjoint the upper and lower receivers.
5. Remove handguard fixing setscrews.
6. Remove the handguard cap.
7. Remove the flash hider from the barrel tip.
8. Remove the handguard from the barrel.
9. Remove the gas chamber nut.
10. After slightly retracting the gas chamber, take out the gas chamber half-moon washers.
11. From the location shown in the picture, push lightly back the gas chamber and when releasing, lightly shake the barrel and remove it from the piston trunk
12. Clean shotgun residues (powder fouling) in the barrel by the ramrod help.
13. Pull back the charging handle and secure back the action through the action stop. Watch the chamber and make sure it is physically empty. Press the action stop to release the action. Extract the action from the upper receiver for cleaning.













## USE OF AMMUNITION

All local or imported hunting bullet and steel buckshot made in standards can be used with your shotgun. Since the shotgun's chamber is designed to be 76mm, your shotgun can be used with all standard 70mm and 76mm bullets. Note that only appropriate gauge and standard manufactured filled bullet should be used.

It should be known that because your shotgun works with gas pressure using excessive pressure bullet might cause wear and fractures in the mechanical parts. So always use your shotgun with appropriate pressure bullet that will not affect its normal operation.

### **Ammunition usage warning**

Excluded from the original caliber and dimensions for shotgun; injury, death or material damage caused by the use of non-standard, handmade, hand-stuffed or improperly manufactured bullet responsibility will not be accepted and THIS IS A LEGAL WARNING.

- **Important warning:** For any reason, uncontrolled gas output or excessive pressure can damage your shotgun and cause death or serious injury. This kind of adverse situation is usually caused by the use of old, faulty, incorrect, or inappropriate cartridge, excessive gunpowder or buckshot filling. It may also be caused by obstacles that may be found in the barrel or the chamber. It's extremely dangerous to use cartridge or buckshot with pressures that exceed industrial standards.
- **Bullet exposure warning:** Shooting in an unventilated environment, firearms cleaning or dealing with ammunition could lead to a possible bullet exposure. Bullets and their components are known to cause birth

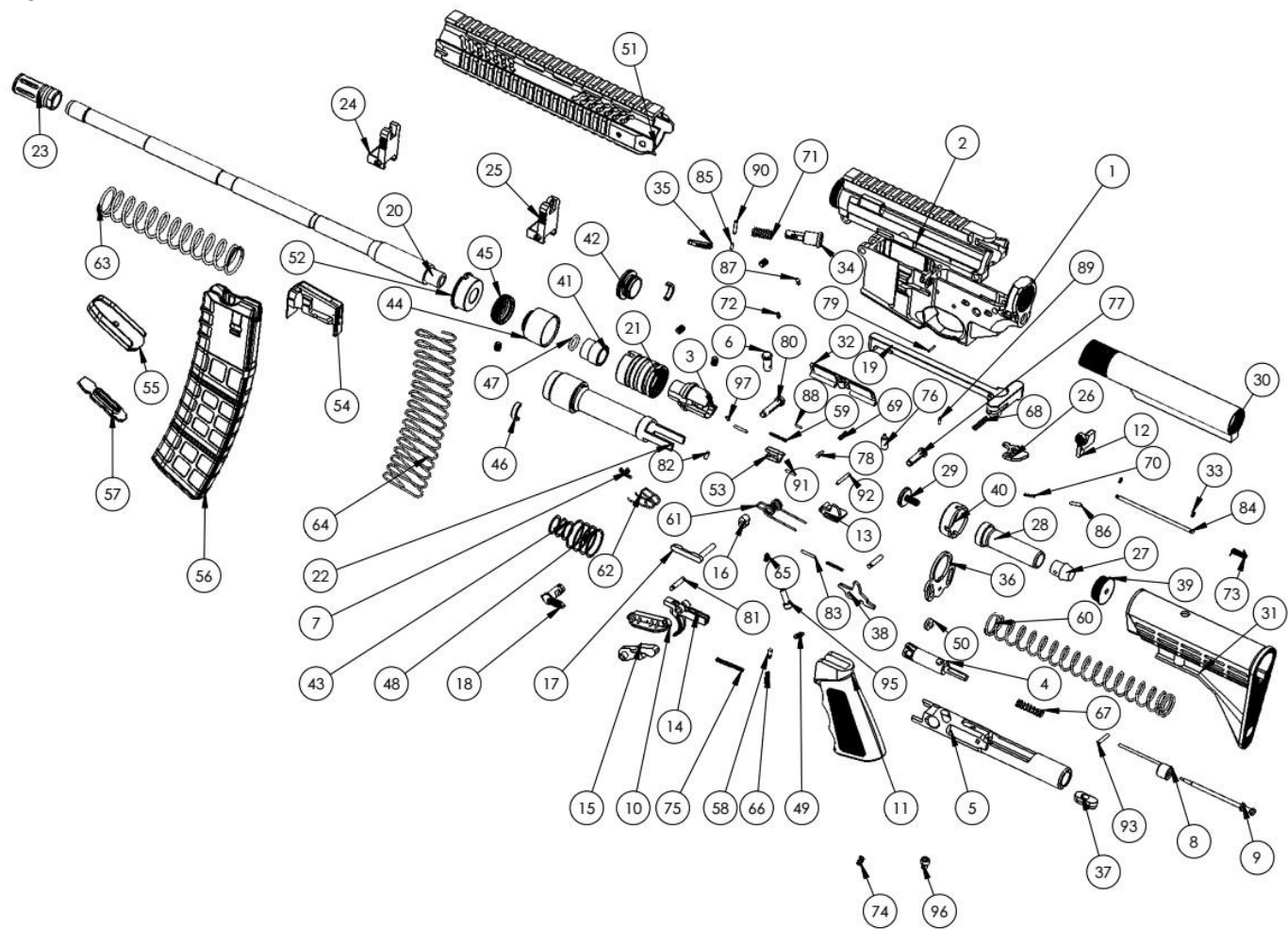
defects, infertility, cancer or some other serious health problems and injuries. Always have enough air conditioning and wash exposed limbs thoroughly.

## **SERIAL NUMBER OF THE FIREARM**

The serial number is located in various parts of your shotgun. Every serial number is specific to a shotgun. It's used for identification and registration. It is recommended that you save your serial number to your user manual and keep the information in a safe place.

## **EXPLODED DIAGRAM**





No.	Components codes and designations
1	Lower receiver
2	Upper receiver
3	Barrel extension
4	Locker
5	Action
6	Locker pin
7	Extractor
8	Ejector
9	Firing pin
10	Grip cover
11	Grip
12	Action stop
13	Scrambler
14	Trigger
15	Cock
16	Magazine latch nut
17	Magazine latch
18	Safety plunger
19	Charging handle
20	Barrel
21	Barrel clamp flange
22	Piston
23	Flash hider
24	Fore sight
25	Rear sight
26	Charging handle lug
27	Cleat rubber

28	Cleat
29	Cleat cover
30	Butt tube
31	Butt
32	Dust cover
33	Dust cover pin segment
34	Forward assist
35	Forward assist pawl
36	Sling linking scale
37	Action aligning cam
38	Inner safety
39	Butt tube cover
40	Butt tube lock nut
41	Piston ring
42	Piston cover nut
43	Piston inner segment
44	Gas chamber
45	Gas chamber nut
46	Gas chamber washer
47	Gas chamber oring
48	Piston outer segment
49	Grip washer
50	Sling scale element
51	Handguard
52	Handguard cap
53	Magazine follower latch
54	Magazine follower
55	Magazine cover



56	Magazine
57	Magazine spring holder
58	Safety locker pin
59	Lower receiver stop spring
60	Butt recolt spring
61	Cock spring
62	Trigger spring
63	Recolt spring
64	Magazine spring
65	Inner safety spring
66	Grip upper spring
67	Locker spring
68	Charging handle spring
69	Action stopping lower pin
70	Forward assist pawl spring
71	Forward assist spring
72	Ejection port cover pin spring
73	Ejection cover spring
74	Extractor spring
75	Magazine latch spring
76	Follower stop pin
77	Receiver back pin
78	Action stopping pin
79	Follower latch pin
80	Receiver front pin
81	Lower Receiver-Trigger pin
82	Barrel extension pin
83	Receiver front locker stop pin

84	Ejection port cover pin
85	Forward assist pin
86	Forward assist pawl pin
87	Ejection port cover hinge pin
88	Ejection port cover block pin
89	Charging handle latch pin
90	Forward assist outer swirl
91	Action stop pin (swirl)
92	Scrambler-Upper receiver swirl
93	Firing pin blocking pin
94	Handguard screw (Setscrew)
95	Grip screw M5 L15
96	Action cam screw M5 L6
97	Locker-extractor swirl pin

## **WARRANTY POLICY**

The manufacturer provides to the original retail purchaser a WARRANTY for a period of two (2) years from the date of purchase against defects in material or workmanship. It will be the discretion of the manufacturer and importer as to whether the parts/labor or replacement will result in a charge to the consumer. The importer or manufacturer has the right to research, inspect, and test the weapon to assess any claim made under the warranty. The warranty is VOID if the firearm has been altered, abused, misused, damaged by accident, fired with hand loaded or reloaded ammunition, obstructions in the barrel, or damage due to failure to provide regular and necessary maintenance.

This warranty is VOID if any unauthorized repair or alteration is performed on the firearm. Also, transportation to and from repair facilities, along with government fees are not covered by the warranty.



**OPTIMUM  
ARMS**

**THE WISE CHOICE**