



**OPTIMUM  
ARMS**

**THE WISE CHOICE**

**INSTRUCTION MANUAL  
FOR  
OPT NK 22 SHOTGUN**

**WARNING: READ THE INSTRUCTIONS AND  
SAFETY PRECAUTIONS IN THIS MANUAL  
CAREFULLY BEFORE USING THE FIREARM.**

## **“SAFETY” FIRST AND FOREMOST**

SHOTGUNS ARE DANGEROUS WEAPONS THAT MAY CAUSE SERIOUS INJURIES OR DEATH. WHEN USING ANY SHOTGUN, SAFETY MUST BE YOUR FIRST AND CONSTANT CONCERN.

READ AND UNDERSTAND THE FOLLOWING SAFETY RULES

### KNOW YOUR OPT NK 22.

Before assembling or using the shotgun, read and understand the instructions and safety warnings contained in this Owner's Manual in order to learn how to use it safely and correctly.

### ALWAYS TREAT YOUR SHOTGUN AS IF IT WAS LOADED.

Use the manual safety button as outlined in this manual. Never move the safety to “FIRE” until you are READY to fire.

KEEP THE MUZZLE POINTED IN A SAFE DIRECTION, The safe direction may be “up” on some occasions, and “down” on others. Never point the muzzle toward anything not intended as a target.

### USE ONLY THE CORRECT AMMUNITION FOR YOUR OPT NK 22.

Be sure to use only the correct gauge and length ammunition for your OPT NK 22 as mentioned whether

on the barrel or the receiver.

ALWAYS UNLOAD YOUR SHOTGUN WHEN NOT SHOOTING.

Never transport or store a loaded shotgun in a vehicle or building. Unload it before climbing a fence or obstruction, or entering a slippery area.

MAINTAIN YOUR SHOTGUN.

Keep the barrel clean and free of obstructions. Clean your shotgun regularly and have it inspected periodically to make sure it is mechanically correct and functioning properly. Worn or damaged parts can be dangerous.

DO NOT MAKE ADJUSTMENTS.

Never make changes or alterations to your shotgun. Do not make any adjustments to the trigger, or change the shape or size of the other parts. Repair should be performed by the Authorized Service Centers.

MAKE YOURSELF SAFE.

Always wear shooting glasses. When target shooting or plinking, always use ear protection. If your shotgun is equipped with a muzzle brake or is "ported", wear ear protection at all times. Never drink alcoholic beverages before or during shooting.

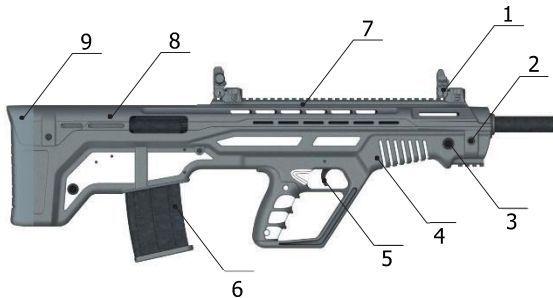
**REMEMBER** - SHOTGUNS SAFETY DEPENDS ON YOU!!

## **TECHNICAL SPECIFICATION**

MODEL	OPT NK 22
CALIBER	12 GAUGE
OPERATION	GAS OPERATED, BULLPUP
WEIGHT (EMPTY)	9.7 LBS
OVERALL LENGTH	29.5 INCHES
HEIGHT	8.25 INCHES
BARREL LENGTH	20 INCHES
SIGHT RADIUS	10.5 INCHES
MAGAZINE CAPACITY	5 & 10
ROUNDS	

## GENERAL SHOTGUN DIAGRAM

- 1) Front Sight
- 2) Hand Guard Fixing Pin
- 3) Front sling swivel slot
- 4) Lower receiver
- 5) Trigger
- 6) Magazine
- 7) Hand Guard
- 8) Dust cover
- 9) Rubber Butt Plate
- 10) Charging Handle
- 11) Rear Sight
- 12) Magazine Release
- 13) Bolt Catch or Release
- 14) Manual Safety Lever
- 15) Barrel





## **A GUN OWNER'S RESPONSIBILITY**

Your constitution has granted you the right and honor to own a shotgun. Treat this privilege with care and respect. As the owner of a shotgun, you have the responsibility and obligation of ensuring that any and all shooting activities are safe for everyone. This requires your personal commitment to carefully read, fully understand, and exercise the principles of proper shotgun safety at all times.

Disclaimer: The shotgun in which these safety rules apply is sold under the expressed conditions that the manufacturer accepts no liability in part or whole for bodily injury, death, or property damage from:

- Improperly or carelessly handling the shotgun.
- Using defective, improper caliber, hand-loaded, or reloaded ammunition.
- Inadequate maintenance of the shotgun resulting in corrosion or damage.
- Negligence or malfunctions.

- Resale in contradiction of any applicable laws or regulations.
- Altering or converting the shotgun's original aesthetic, functioning mechanisms, accessories, or mechanical configuration.
- Discharging with criminal intent or negligence.
- Failure to understand, adhere to, and follow the rules of shotgun safety when using or handling the shotgun.
- Or any other circumstances outside the manufacturer's direct or immediate control.

## **SERIAL NUMBER OF THE SHOTGUN**

The serial number is located on various parts of the shotgun. Each serial number is specific to that shotgun and is used for identification and registration. It is recommended that you record your serial number in your manual and keep the information in a secured location.

## **SHOTGUN SAFETY**

**IMPORTANT WARNING:** It is important for you to receive proper training from a competent shotguns instructor or authority before beginning to shoot or when handling the shotgun.

**IMPORTANT WARNING:** Failure to adhere to the rules of shotgun safety can result in serious injury, death, or destruction of property. Children are attracted to and can operate shotguns that can cause severe injuries or death. Prevent child access by always keeping guns locked away and unloaded when not in use. If you keep a loaded shotgun where a child can obtain and improperly use it, you may be fined or sent to prison.

**1) COMPLETELY READ AND UNDERSTAND YOUR OWNER'S MANUAL GUIDELINES BEFORE USING YOUR OPT NK 22.**

You should fully understand the function of all of the components and mechanics of the shotgun. Before you remove it out of the box thoroughly read the owner's manual on how to properly carry, handle, load, unload, and store your new shotgun. Know the rules of proper gunsafety and exercise them at all times because failure to do so may result in death or injury to yourself or others. Because it is impossible to list every shotgun situation or scenario, be aware that certain circumstances may require additional safety rules unique to a particular situation. In these cases, we recommend that you use sound gun safety rules, judgment and discretion.



## **2) ALWAYS LEARN THE SPECIFIC MECHANICAL AND HANDLING CHARACTERISTICS OF YOUR SHOTGUN.**

All shotguns are different thus it is important for you to understand how to properly carry, use, and handle each one according to its specific guidelines. Before using anyshotgun, one must completely familiarize themselves

### **NEVER:**

- Give the shotgun to any person who has not thoroughly familiarized himself or herself with all ofthe information, safety rules, and warnings in the owner's manual.

with the type of shotgun and its specific safe handling procedures for loading, unloading, carrying, shooting, maintenance, and storing.

### **ALWAYS KEEP THE SHOTGUN UNLOADED UNTIL READY TO USE.**

Shotguns should be kept unloaded when not in use. Whenever you pick up a shotgun, immediately engage the safety device and remove the magazine to visually inspectthe chamber and confirm that it is clear. Always unload allammunition from the chamber and remove the magazine after:

- 1) shooting,

- 2) before putting the shotgun away,
- 3) putting it into a holster,
- 4) when not in use, and when handing it over to another person.

### **NEVER:**

- Leave a loaded gun unattended, propped up against a surface, or out of your hands.
- Assume a shotgun is unloaded, even if you used it last. Always check to make sure that there is no ammunition and the chamber is clear.
- Load a cartridge into the chamber until you are ready to fire.
- Carry or transport your shotgun with live ammunition in the chamber.
- Pass a shotgun to another person or accept a shotgun from another person, until the cylinder or action is open and you have personally checked that the weapon is completely unloaded.
- Haul a loaded shotgun openly or in a carrying case.
- Transfer or hand a loaded shotgun to someone else

#### **4) ALWAYS KEEP YOUR FINGER OFF THE TRIGGER UNTIL YOU ARE READY TO SHOOT.**

When holding the shotgun be sure to rest your finger on the trigger guard and along the side of the gun.

##### **NEVER:**

- Touch the trigger until you are ready to fire.
- Engage in horseplay while handling a shotgun.
- Rely on the safety devices of the gun. Mechanical safeties are never foolproof and can wear out and malfunction over time. Remember to always handle all shotguns using proper gun safety guidelines.

#### **5) ALWAYS KEEP THE GUN POINTED IN A SAFE DIRECTION.**

A safe direction is one in which an accidental discharge cannot or would not cause injury or harm to yourself or others. Use extreme caution especially when loading and unloading your OPT NK 22. When handling any shotgun always treat it as if it was loaded and ready to fire, even if you think it is empty. The recommended carrying position of your OPT NK 22 is with the hammer in decocked position.

**NEVER:**

- Point your shotgun at anything you don't intend to shoot.
- Use a shotgun under the influence of alcohol, drugs, or any other substances that may impair your judgment, skills, or physical abilities.
- Target shoot or hunt with a shotgun when you are fatigued or too tired to operate the shotgun safely.
- Use your shotgun if you have an illness or disability that could compromise your judgment and the safety of yourself or others.

**6) ALWAYS USE THE CORRECT AMMUNITION.**

All shotguns are manufactured to use a certain caliber or gauge of ammunition. Only use ammunition that the manufacturer has recommended. Always verify before loading that you have the correct ammunition that matches the manufacturer's recommendations. Using

**NEVER:**

- Shoot the gun unless you know you have the proper ammunition.
- Use hand loaded, nonstandard or reloaded ammunition.
- Fire ammunition that exceeds industry standard pressure specifications.
- Use old, soiled, or damaged ammunition.

improperly reloaded or incorrect ammunition can cause death and injury. This can also damage or destroy your shotgun which will void any warranty.

- Use ammunition which does not feed reliably in your particular shotgun as it may malfunction at a critical juncture.

## **7) ALWAYS STORE YOUR SHOTGUN IN A SECURED STORAGE AREA TO PREVENT UNAUTHORIZED ACCESS OR USE FROM OTHER INDIVIDUALS.**

There are many types of shotgun storage devices as well as locking devices attached directly to the shotgun itself.

Each individual must consider their particular circumstances so that the shotgun is stored and maintained for optimal safety and security.

Metal gun safes are recommended over open racks or glass front cabinets. Mechanical safeties built into the shotgun can fail and should not be used as a substitute for safe gun handling and adherence to all shotgun safety rules. Additionally, always store your ammunition locked up and secured separately from any shotguns.

**NEVER:**

Store or hide a loaded shotgun

Leave your shotguns where unauthorized access from other individuals can occur.

Allow access to individuals who do not understand or follow the rules of proper gun safety.

Leave an unsecured shotgun in a bed, drawer, closet, or any other vehicle that could allow access to children or other unauthorized individuals.

- to any shotguns without close supervision and proper shotgun safety training.

**8) ALWAYS COMPLY WITH ALL LOCAL, STATE, AND FEDERAL LAWS THAT GOVERN THE OWNERSHIP, STORAGE, CARRYING, AND USE OF SHOTGUNS.****NEVER:**

- Vandalize any public or private property by using it as a target.
- Poach a game animal out of season.
- Kill any animal you don't intend to eat.

## 9) **ALWAYS KNOW YOUR TARGET AND WHAT IS BEYOND.**

Before you pull the trigger be sure of your target and what is behind it. Shoot only in areas that have approved backdrops such as a shooting range, or backstops such as a hillside or berm. Also, know how far your shot will travel in case you miss the target or the bullet ricochets.

### **NEVER:**

- Fire in the direction in which there are people.
- Fire at a sound, movement, or a flash of color.
- Shoot directly upwards or at a high angle of elevation. Firing at or into the air can have enough energy to travel long distances and accidentally injure or kill someone.
- Shoot across a highway or other roadway.

## **10) ALWAYS WEAR EYE/EAR/BODY PROTECTION.**

Gases and debris can cause injury so it is very important that one wears protective gear to preserve their hearing and eyesight. Also, while in the field wear at least 1000 square inches or more of blaze orange so that you can

### **NEVER:**

- Discharge a shotgun in a poorly ventilated area.

**IMPORTANT WARNING:** Possible lead exposure can occur when discharging shotguns in a poorly ventilated area, cleaning the shotgun, or handling ammunition. Lead and its components are substances known to cause birth defects, reproductive destruction/impairment, cancer, or other serious health conditions and injury. Always have adequate ventilation at all times and wash your hands and other contact areas thoroughly after each exposure.

be visible by others.

## **11) ALWAYS HANDLE WITH EXTREME CARE IF YOUR GUN FAILS TO FIRE WHEN THE TRIGGER IS PULLED.**

If the ammunition doesn't fire when you pull the trigger, STOP! and remember to always keep the shotgun pointed in a safe direction. Keep your face away from the breech, then put the safety on, carefully open the action, unload the shotgun and dispose of the cartridge safely. Always keep in mind that anytime there is a shell



in the chamber, your OPT NK 22 is LOADED and ready to fire. Even if you tried to shoot and the shotgun did not fire, always treat it as if it could still discharge.

**12) ALWAYS TREAT THE SHOTGUN AS IF IT WAS LOADED. EVEN IF THE SAFETY IS POSITIONED CORRECTLY AND KEEP YOUR FINGERS AWAY FROM THE TRIGGER WHEN LOADING AND UNLOADING.**

A gun is a mechanical device and is not foolproof and is subject to wear and tear over time. Always keep your fingers away from the trigger when you are loading and unloading, if the manual safety proves to be ineffective for any reason, danger of an unintentional discharge exists. The weapon is then to be immediately unloaded and restricted from further use. Contact the factory or your importer so that the gun can be inspected and repaired by an authorized gunsmith. REMEMBER THAT ANY SHOTGUN SAFETY MECHANISMS CAN FAIL, EVEN IF THE SAFETY IS ENGAGED. YOU SHOULD ALWAYS ASSUME THAT A SHOTGUN IS LOADED WHEN HANDLING IT.

**NEVER:**

- Risk an accidental discharge by walking with a loaded shotgun when going through or climbing obstacles such as a fence or other obstructive barriers.
- Rely on your gun's safety mechanisms.
- Sleep with a loaded shotgun in your possession.

**13) ALWAYS KEEP YOUR OPT NK 22 IN THE SAME MECHANICAL AND STRUCTURAL CONFIGURATION AS IT WAS WHEN IT WAS MANUFACTURED.**

This shotgun was produced under specific manufacturer guidelines and should not be altered or changed under ANY circumstances. Performing conversions by altering the trigger, mechanical components, safety mechanisms, or using any other products other those provided in the original box is NOT RECOMMENDED by the manufacturer, and could result in death, bodily harm, or compromising your safety or the safety of others. Any alteration made to the shotgun also voids the factory warranty. Like any mechanical device it is subject to normal wear and tear from use. In order to maintain optimal safety and performance it should be periodically serviced. You must regularly clean and lubricate your shotgun to maintain its functionality, accuracy, safety, and reliability. Always before cleaning or lubricating any shotgun make sure that you perform a safety check to make sure that the shotgun is

**NEVER:**

- Alter, convert, or change your shotgun from its original manufacturer's configuration.
- Try to shoot out an obstruction by loading another shell and firing.

completely unloaded prior to performing any routine maintenance. If for some reason your shotgun does require repairing, you must contact your importer for an approved service provider. Using unauthorized personnel to repair your shotgun will void your manufacturer's warranty.

**IMPORTANT WARNING:** This shotgun was designed to function properly in its original condition. The manufacturer will not be held liable or legally responsible for any alteration performed on it after it leaves their control. This includes any addition or substitution of parts or accessories that are not manufactured by original manufacturer. Any changes made to the shotgun is specifically contrary to our instructions and we expressly do not authorize any changes to be made after manufacture. Do not jeopardize the safety of yourself or others by making modifications to your OPT NK 22.

#### **14) ALWAYS MAKE SURE THE BARREL IS CLEAR OF ANY OBSTRUCTIONS BEFORE SHOOTING.**

Before loading always perform a safety check to make sure that there is no ammunition in the chamber or magazine. Examine the barrel for any obstructions or debris such as excess lubricant, dirt, or grease. If the bore is obstructed it can cause increased pressure causing the barrel to bulge or burst during use. Always use a cleaning rod and patch to remove any residues or obstructions in the barrel. Be familiar with your OPT NK

22. If the noise or recoil seems muffled or weak then STOP! And proceed to unload your shotgun and check to make sure nothing is lodged in the barrel.

---

**IMPORTANT WARNING:** Children are attracted to and can operate shotguns that can cause severe injuries or death. Prevent child access by always keeping guns locked away and unloaded when not in use. If you keep a loaded shotgun where a child can obtain and improperly use it, you may be fined or sent to prison.

---

## **TRANSPORTATION**

For your own safety and the safety of others, always transport the shotgun unloaded, decocked and under lock. Never carry or transport the shotgun with a round in the chamber and the hammer cocked.

## **STORAGE**

Shotguns should always be stored securely and unloaded, under lock and key. When storing your shotgun, keep it separated from any ammunition and out of the reach of children and other inexperienced or unauthorized persons. Never place or store any shotgun in such a manner that it may be dislodged or dropped.

## **LOADING THE SHOTGUN**

- 1) First, point the shotgun in a safe direction. Remember, a safe direction means that the gun is pointed so that even if it were to go off, it would not cause injury,

damage, or death. Always perform a safety check to make sure that the chamber is empty.

- 2) When the magazine is empty, the bolt catch lever holds the bolt open at the rear. Press the magazine release to remove the empty magazine and insert a loaded magazine. Remember to only use ammunition that is recommended by the manufacturer.
- 3) Push down the bolt catch lever with the thumb of your shooting hand. This will allow the bolt to move forward and therefore chamber a round.

THE SHOTGUN IS NOW LOADED AND READY TO FIRE!

**IMPORTANT WARNING:** ALWAYS UNLOAD YOUR SHOTGUN IMMEDIATELY AFTER SHOOTING

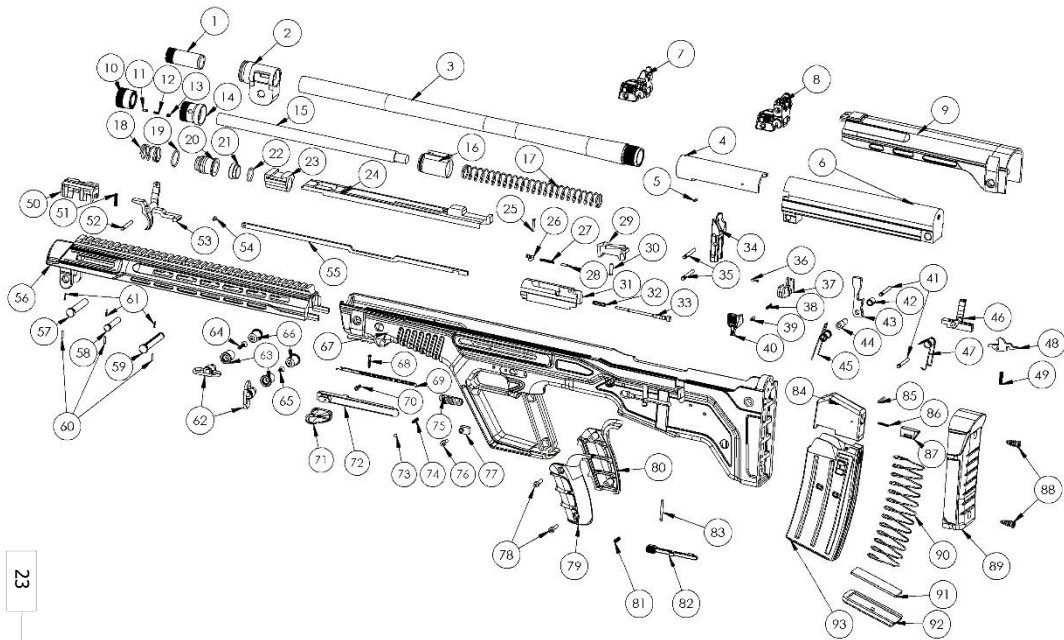
## UNLOADING THE SHOTGUN

- 1) Point the shotgun in a safe direction. Remember, a safe direction means that the gun is pointed so that even if it were to go off, it would not cause injury, damage, or death.
- 2) Keep your fingers off the trigger and remove the magazine.
- 3) Pull back the charging handle one or more times to ensure the chamber is empty. Watch for a live round or empty case to be ejected. Pull the charging handle fully rearward and lock the bolt with the bolt catch lever.
- 4) Make sure the last round in the chamber has been extracted and ejected. Visually and physically check the chamber and the magazine well to make sure the shotgun has been fully unloaded. Perform a safety check by physically inserting your index finger in the chamber to feel for the presence of a round or cartridge case in the chamber.

## **THE SHOTGUN IS NOW UNLOADED!**

- 1) Depress the bolt catch lever and the bolt will be released forward.
- 2) Unload and store the empty magazine.
- 3) Pick up and store all ammunition rounds in a secured area.
- 4) Perform proper maintenance such as cleaning and oiling after each shooting session.

# EXPLOSION DIAGRAM



## COMPONENTS LIST

---

1	4001001	Choke
2	4001002	Barrel Fixing Ring3
	4001003	Barrel
4	4001004	Barrel Extension
5	4001005	Barrel Extension pin
6	4001006	Upper Receiver
7	4001007	Front Sight
8	4001008	Rear Sight
9	4001009	Dust Cover
10	4001010	Gas Regulator Contra Nut
11	4001011	Gas Regulator Taw
12	4001012	Gas Regulator Spring
13	4001013	Gas Regulator Setscrew
14	4001014	Gas Regulator Nut
15	4001015	Op Rod
16	4001016	Barrel Lug
17	4001017	Recoil Spring
18	4001018	Gas Regulator Spring
19	4001019	Gas Regulator Ring
20	4001020	Gas Piston
21	4001021	O-Ring
22	4001022	Gas Piston Ring
23	4001023	Bolt Carrier Bush
24	4001024	Bolt Carrier
25	4001025	Extractor Mounting Pin
26	4001026	Extractor
27	4001027	Extractor Spring
28	4001028	Under Extractor Pin
29	4001029	Locking Block
30	4001030	Firing Pin Holder
31	4001031	Bolt
32	4001032	Firing Pin Spring
33	4001033	Firing Pin
34	4001034	Feed Ramp
35	4001035	Feed Ramp Pin

---



---

36	4001036	Bolt Catch Pin
37	4001037	Bolt Catch Housing
38	4001038	Bolt Catch Soring
39	4001039	Bolt Catch Spring Capsule
40	4001040	Bolt Catch
41	4001041	Hammer-Rear Trigger Mounting Pin
42	4001042	Hammer Housing Female
43	4001043	Hammer
44	4001044	Hammer Housing Male
45	4001045	Hammer Spring
46	4001046	Rear Trigger
47	4001047	Rear Trigger Spring
48	4001048	Trigger Insert
49	4001049	Trigger Insert Spring
50	4001050	Trigger box
51	4001051	Front Trigger Spring
52	4001052	Front Trigger Mounting Pin
53	4001053	Front Trigger
54	4001054	Trigger Transfer Plate Pin
55	4001055	Trigger Transfer Plate
56	4001056	Handguard
57	4001057	Handguard Pin
58	4001058	Upper Receiver Pin
59	4001059	Dust Cover Pin
60	4001062	Main Pins Stopping Pin
61	4001061	Main Pins Stopping Pin Spring
62	4001062	Sling Swivel
63	4001063	Sling Left Seating
64	4001064	Front Sling Screw
65	4001065	Rear Sling Screw
66	4001066	Sling Right Seating
67	4001067	Lower Receiver
68	4001068	Charging Handle Spring Fixing Screw
69	4001069	Charging Handle Spring
70	4001070	Charging Handle Fixing Screw
71	4001071	Charging Handle
72	4001072	Charging Handle Insert

---

---

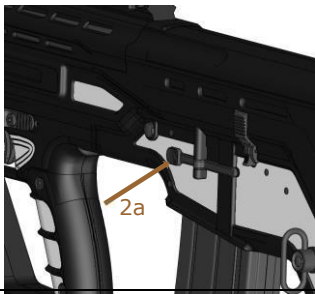
73	4001073	Safety Lever Taw
74	4001074	Safety Lever Spring
75	4001075	Outer Safety Lever
76	4001076	Safety Lever Screw
77	4001077	Inner Safety Lever
78	4001078	Hand Grip Cover Fixing Screw
79	4001079	Hand Grip Cover Left
80	4001080	Hand Grip Cover Right
81	4001081	Magazine Release Spring
82	4001082	Magazine Release
83	4001083	Magazine Release Pin
84	4001084	Follower
85	4001085	Follower Latch Pin
86	4001086	Follower Latch Spring
87	4001087	Follower Latch
88	4001088	Recoil Pad Screw
89	4001089	Recoil Pad
90	4001090	Magazine Spring
91	4001091	Magazine Spring Bottom Plate
92	4001092	Magazine Bottom Cover
93	4001093	Magazine

---

## OPT NK 22 SHOTGUN DISASSEMBLY INSTRUCTIONS

**IMPORTANT WARNING:** Before you begin any disassembly, always

- 1) point the shotgun in a safe direction,
- 2) be sure that you remove the magazine from the shotgun, and
- 3) visually and manually inspect the chamber to confirm that it is empty.



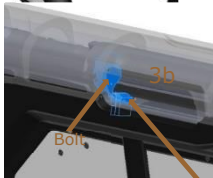
- 1) Point the shotgun in a safe direction and keep fingers off the trigger and out of the trigger guard.



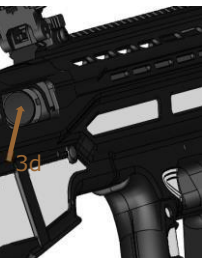
- 2) Depress the mag (2a) release and remove the magazine (2b).



3a



Bolt  
Bolt lever



3d

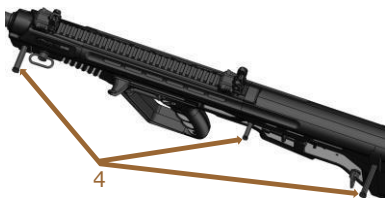


3e

3) Pull the bolt back by use of the charging handle (3a) and lock it to the rear(3b) by depressing the bolt lever (3c).

Once the bolt is locked to the rear, both visually and manually inspect the chamber of the shotgun to confirm that the chamber is empty (3d). Also, check to make sure the magazine cell is clear.

Then cycle the bolt forward by pressing the bolt release lever (3e).



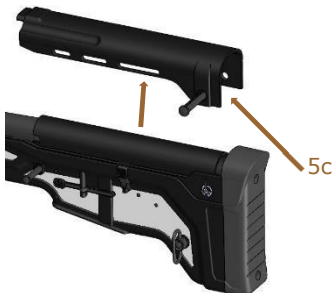
4) Next, remove the front, middle and back pins by pushing them out. These pins are designed to stay on the receiver to prevent losing components.



5) You will then be able to remove the hand guard by pulling it up from the front side (5a).



This will allow to free it from the upper receiver grip (5b).



And then remove the rear dust cover (5c).



6) Now pull up on the barrel and remove the upper assembly(6a). Pay attention to where the barrel block (Barrel Fixing Ring) is located on the front of the barrel for reassembly purposes.

Next, remove the Barrel Fixing Ring from the barrel (6b). You now have the barrel and receiver group.



7) Now, to break down the upper assembly you must first remove the lock nut (Gas Regulator Contra Nut). (7a)

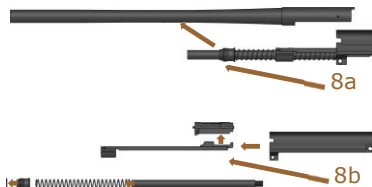
Then remove the gas regulator nut and spring (7b).

You will now see the gas ring. Pay extra attention to the gas ring when removing it.

It is made with a small step on the bottom that fits into the gas block



of the barrel; you will need to remember this for reassembly (7c).



8) Finally, separate the barrel from the receiver group (Upper receiver) (8a) and remove the gas piston, action bar, bolt assembly, and action bar spring (8b).

## **THE SHOTGUN IS NOW FIELD STRIPPED.**

As with most shotguns, reassembly is carried out in the reverse order of disassembly. Therefore, refer to the section above for reassembling process.

## **AMMUNITION**

All steel or lead shot 12-gauge shotgun cartridges manufactured and loaded with current industry specifications can be used in the OPT NK 22 shotgun. This shotgun has 3-inch chambers and may be used with all standard commercially manufactured 2 3/4 inch (70mm) and 3 inch (76mm) shot shells. It is intended to be used with only standard ammunition of the proper gauge and loading. Remember that the shotgun functions by energy generated by gas expansion. Therefore, one must always use ammunition that is strong enough to fully cycle the action. The OPT NK 22 shotgun may require a breaking in period before it will function using light loads. If you experience any initial functioning problems, we recommend firing 3-4 boxes of standard hunting cartridges.

**Ammunition Disclaimer:** The manufacturer disclaims any responsibility for damage or injury that occurs in connection with or as a result of using faulty, nonstandard, remanufactured, hand loaded (reloaded) ammunition or other shotshells other than those for which the shotgun was originally chambered.



**Ammunition Warning:** Shotguns can be damaged, and death or serious injury may result from any condition which generates excessive pressure or uncontrolled release of gas within the shotgun. These adverse conditions can be caused by chamber or bore obstructions, propellant powder overloads, or by old, defective, incorrect, or improperly loaded and assembled shotshell components. It is extremely dangerous to use a shotshell whose pressure exceeds those developed to industry standards. Any shotgun can be blown up with excessive pressure.

**Lead Exposure Warning:** Possible lead exposure can occur when discharging shotguns in a poorly ventilated area, cleaning the shotgun, or handling ammunition. Lead and its components are substances known to cause birth defects, reproductive destruction/impairment, cancer, or other serious health conditions and injury. Always have adequate ventilation at all times and wash your hands and other contact areas thoroughly after each exposure.

## **CHOKES**

The OPT NK 22 shotgun comes with 3 screw-in internal chokes (Full, Modified, and Cylinder). Each choke can be identified by the number of notches on it (I: Full, III: Modified, IIIII: Improved Cylinder). A choke wrench is supplied in the box with the chokes. Before you attempt to install a choke always perform a safety check to make sure that the shotgun is unloaded and pointed in a safe direction. To install the choke, you can insert it into the end

of the barrel and hand screw it. It can then be tightened with the choke wrench to secure it in place.

---

**Screw-in Choke Warning:** Never peer directly into the shotgun's muzzle or change chokes when the gun is loaded regardless of the position of the safety. Never fire the shotgun if the screw-in choke is not fully and tightly bottomed to the barrel threads, or improperly installed or "cross-threaded", or if the threads of the barrel or choke insert is damaged. In this situation the barrel will be damaged and the choke insert will be propelled out of the muzzle with high velocity which can result in death, serious injury, or property damage. Never fire the shotgun without the screw-in choke in place as it will cause an unpredictable shot pattern and damage the choke threads in the barrel thus making correct installation of the screw-in choke impossible without expensive re-barreling. Never use other makes of choke tubes except for the OPT NK 22 brand and never alter any components provided with your OPT NK 22.

---

**Manufacturers Warning:** This manufactured shotgun was designed to perform with its original parts. It is your responsibility to make sure that any parts you buy are authentic and correctly installed and that the parts have not been altered or changed. It is imperative that only factory parts be used as replacements to assure that the shotgun remains functionally safe and operates accurately. The gun owner accepts full responsibility for the correct reassembly and functioning of the shotgun after any disassembly or replacement of parts.

## CLEANING AND MAINTENANCE

**Important Warning:** Before you start cleaning your shotgun always make sure it is unloaded and pointed in a safe direction.

**Lubrication Warning:** Firing a shotgun with oil, grease, or other debris partially obstructing the bore may result in damage to the shotgun or injury to the shooter and those nearby. Before firing make sure the bore and chamber of the barrel is unobstructed and dry. Never spray or apply lubricant on shotshells. Firing another shotshell behind an obstruction may damage the shotgun and cause death or injury. Only use lubricants properly and sparingly. You are responsible for the proper care and maintenance of your shotgun.

**STEP 1:** Disassemble your shotgun (See pages 27-31).

**STEP 2:** Using a proper cleaning rod, run a solvent-wet patch through the bore several times. This will then be followed by running dry patches through the bore to remove any debris or residue.

**STEP 3:** If the bore is leaded to the extent that the above patch cleaning procedure did not remove the lead, then scrub the full length of the bore with a solvent-wet brass bristle brush. When the leading is loose, repeat step 2.

**STEP 4:** The surfaces of the bolt carrier, ejector, and inside surfaces of the receiver should be coated very lightly with non-penetrating lubricating oil.

**STEP 5:** Reassemble the shotgun and wipe the exterior metal surfaces sparingly with an oiled cloth. Swab the bore with an oily patch before storing the shotgun.

STEP 6: Place the shotgun in a safe, locked storage space where unauthorized persons cannot access the shotgun. Never store the shotgun in a leather case as leather attracts moisture even though it may appear dry.

## **WARRANTY POLICY**

The manufacturer provides to the original retail purchaser a WARRANTY for a period of two (2) years from the date of purchase against defects in material or workmanship. It will be the discretion of the manufacturer and importer as to whether the parts/labor or replacement will result in a charge to the consumer. The importer or manufacturer has the right to research, inspect, and test the weapon to assess any claim made under the warranty.

## **WARRANTY EXCLUSIONS**

The warranty is VOID if the shotgun has been altered, abused, misused, damaged by accident, fired with handloaded or reloaded ammunition, obstructions in the barrel, or damage due to failure to provide regular and necessary maintenance. This warranty is VOID if any unauthorized repair or alteration is performed on the shotgun. Also, transportation to and from repair facilities, along with government fees are not covered by the warranty.



**OPTIMUM  
ARMS**

**THE WISE CHOICE**